



Sussex Road

, Bury St. Edmunds, IP32 6TE

Isaac Estates are delighted to market this well presented one bedroom first floor flat situated on Sussex Road.

The property consists entrance hallway, sitting room / dining room, refitted kitchen with electric oven and hob included, bedroom with fitted wardrobes and bathroom.

Video tour available upon request.

£850 Per month

Sussex Road

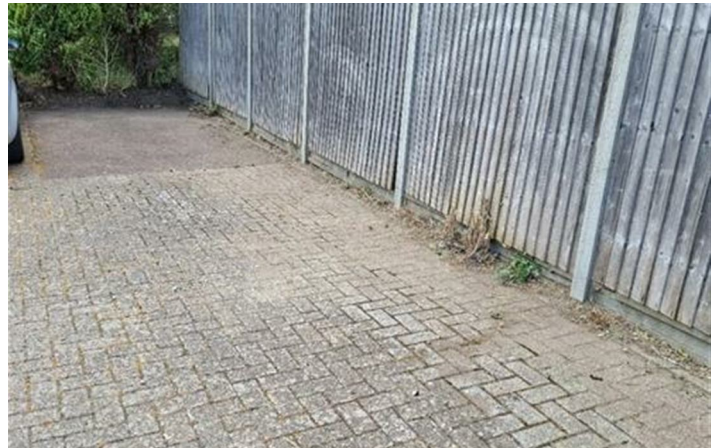
, Bury St. Edmunds, IP32 6TE



- MODERN FIRST FLOOR FLAT
- REFITTED KITCHEN WITH ELECTRIC OVEN AND HOB INCLUDED
- UNFURNISHED, ELECTRIC WET RADIATOR SYSTEM
- VIDEO TOUR AVAILABLE UPON REQUEST
- ENTRANCE HALLWAY
- BEDROOM WITH FITTED WARDROBES INCLUDES
- MINIMUM TERM CONTRACT TWELVE MONTHS
- SITTING ROOM / DINING ROOM
- BATHROOM WITH BATH AND SHOWER
- PARKING, EPC 72C



[Directions](#)





Floor Plan

These particulars, whilst believed to be accurate are set out as a general outline only for guidance and do not constitute any part of an offer or contract. Intending purchasers should not rely on them as statements of representation of fact, but must satisfy themselves by inspection or otherwise as to their accuracy. No person in this firm's employment has the authority to make or give any representation or warranty in respect of the property.

12 Langton Place, Hatter Street, Bury St Edmunds, Suffolk, IP33 1NE
Tel: 01284 620011 Email: ryan@isaacestates.co.uk www.isaacestates.co.uk

