



Whiting Street , Bury St Edmunds, IP33 1NX

Isaac Estates are delighted to market this spacious 3/4 bedroom apartment set over two floors. Situated in the town centre, you will find yourself just a stone's throw away from an array of shops, cafes, and local amenities, making this location both convenient and vibrant.

In brief the property consists entrance hallway with stairs leading to the first floor landing, kitchen with electric oven and hob included (Fridge Freezer can remain), spacious sitting room / dining room, master bedroom with freestanding wardrobes, family bathroom. The second floor offers a further two bedrooms with an additional reception room which could be used as a fourth bedroom / sturdy. (all with interconnecting doors)

Viewing highly recommended

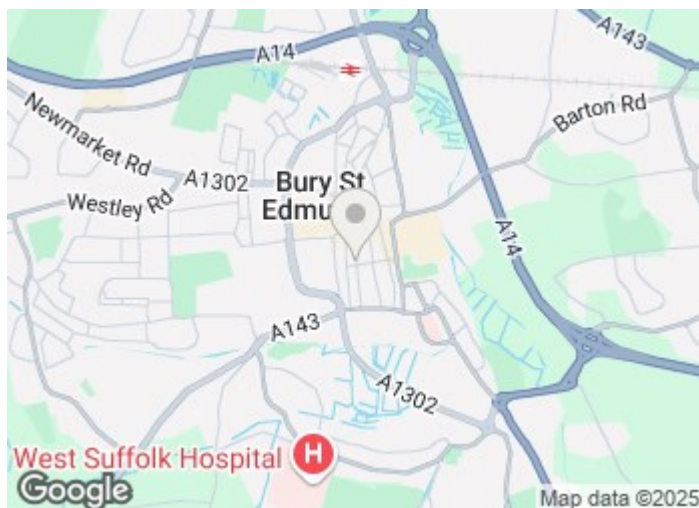
£1,295 Per month

Whiting Street

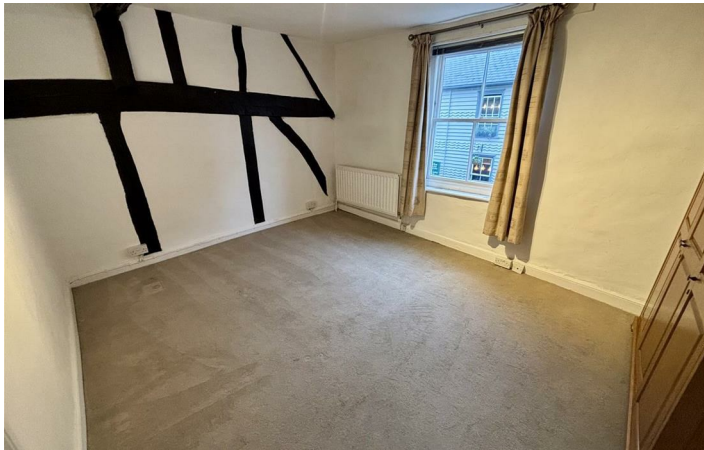
, Bury St Edmunds, IP33 1NX



- TOWN CENTRE 3/4 BEDROOM APARTMENT SET OVER TWO FLOORS
- ENTRANCE HALLWAY, KITCHEN WITH ELECTRIC OVEN AND HOB (FRIDGE / FREEZER CAN REMAIN)
- SPACIOUS SITTING ROOM / DINING ROOM
- BEDROOM WITH FREESTANDING WARDROBES, FAMILY BATHROOM
- FURTHER 3 BEDROOMS / STUDY TO THE SECOND FLOOR
- GAS CENTRAL HEATING, UNFURNISHED
- MINIMUM TERM CONTRACT TWELVE MONTHS
- COUNCIL TAX BAND C, EPC



Directions





Floor Plan

These particulars, whilst believed to be accurate are set out as a general outline only for guidance and do not constitute any part of an offer or contract. Intending purchasers should not rely on them as statements of representation of fact, but must satisfy themselves by inspection or otherwise as to their accuracy. No person in this firm's employment has the authority to make or give any representation or warranty in respect of the property.

12 Langton Place, Hatter Street, Bury St Edmunds, Suffolk, IP33 1NE
Tel: 01284 620011 Email: ryan@isaacestates.co.uk www.isaacestates.co.uk

