



## Northumberland Avenue

, Bury St. Edmunds, IP32 6LR

NEW CARPETS BEING FITTED - Isaac Estates are delighted to market this three bedroom terraced house situated on the Mildenhall Estate. The property has recently been updated with a brand new kitchen with electric oven and hob, new bathroom, completely redecorated through out and new carpets to be fitted.

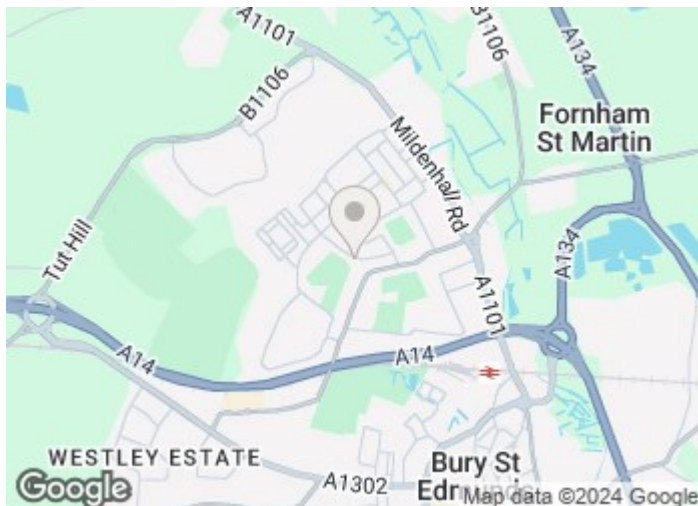
£1,300 Per month

# Northumberland Avenue

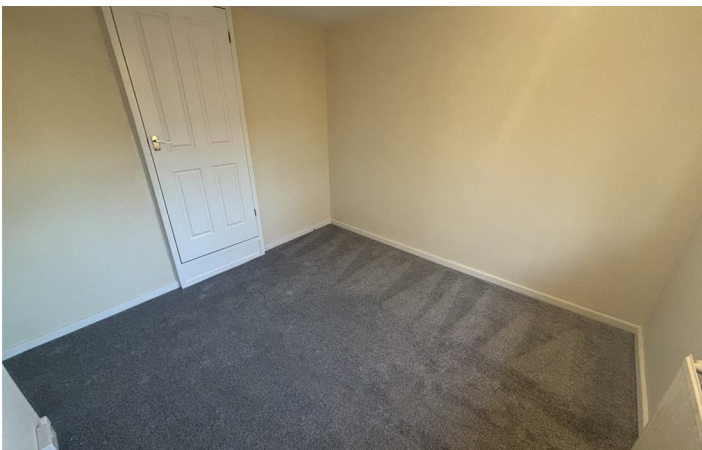
, Bury St. Edmunds, IP32 6LR



- THREE BEDROOM TERRACED HOUSE
- FRONT PORCH, SITTING ROOM
- NEW KITCHEN WITH ELECTRIC OVEN AND HOB / DINING ROOM
- THREE BEDROOMS (ONE WITH SINGLE WARDROBE CUPBOARD)
- BRAND NEW BATHROOM
- REAR GARDEN, LARGE GARDEN STORE
- DRIVEWAY PARKING, MINIMUM TERM CONTRACT TWELVE MONTHS
- NEW CARPETS TO BE FITTED, EPC 70C



Directions





# Floor Plan

These particulars, whilst believed to be accurate are set out as a general outline only for guidance and do not constitute any part of an offer or contract. Intending purchasers should not rely on them as statements of representation of fact, but must satisfy themselves by inspection or otherwise as to their accuracy. No person in this firm's employment has the authority to make or give any representation or warranty in respect of the property.

12 Langton Place, Hatter Street, Bury St Edmunds, Suffolk, IP33 1NE  
Tel: 01284 620011 Email: [ryan@isaacestates.co.uk](mailto:ryan@isaacestates.co.uk) [www.isaacestates.co.uk](http://www.isaacestates.co.uk)

