



Abbots Gate , Bury St Edmunds, IP33 2GL

COMING SOON!

Stylish one bedroom first floor apartment finished to a very high standard, situated within a short distance to West Suffolk Hospital and the town centre of Bury St Edmunds. The spacious apartment offers entrance hallway, open plan kitchen with integrated appliances included, sitting room / dining room, stylish shower room and double bedroom (fitted sliding wardrobes to be fitted). The property further benefits one allocated parking space and visitor parking.

Please contact the office to register your interest and to request a video tour.

£1,100 Per month

Abbots Gate

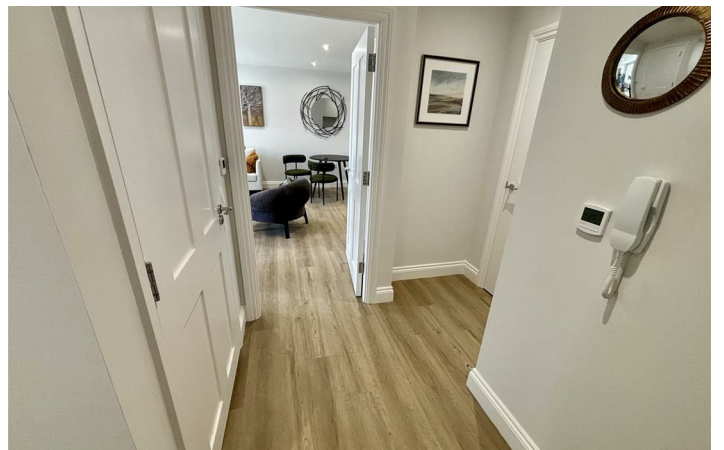
, Bury St Edmunds, IP33 2GL



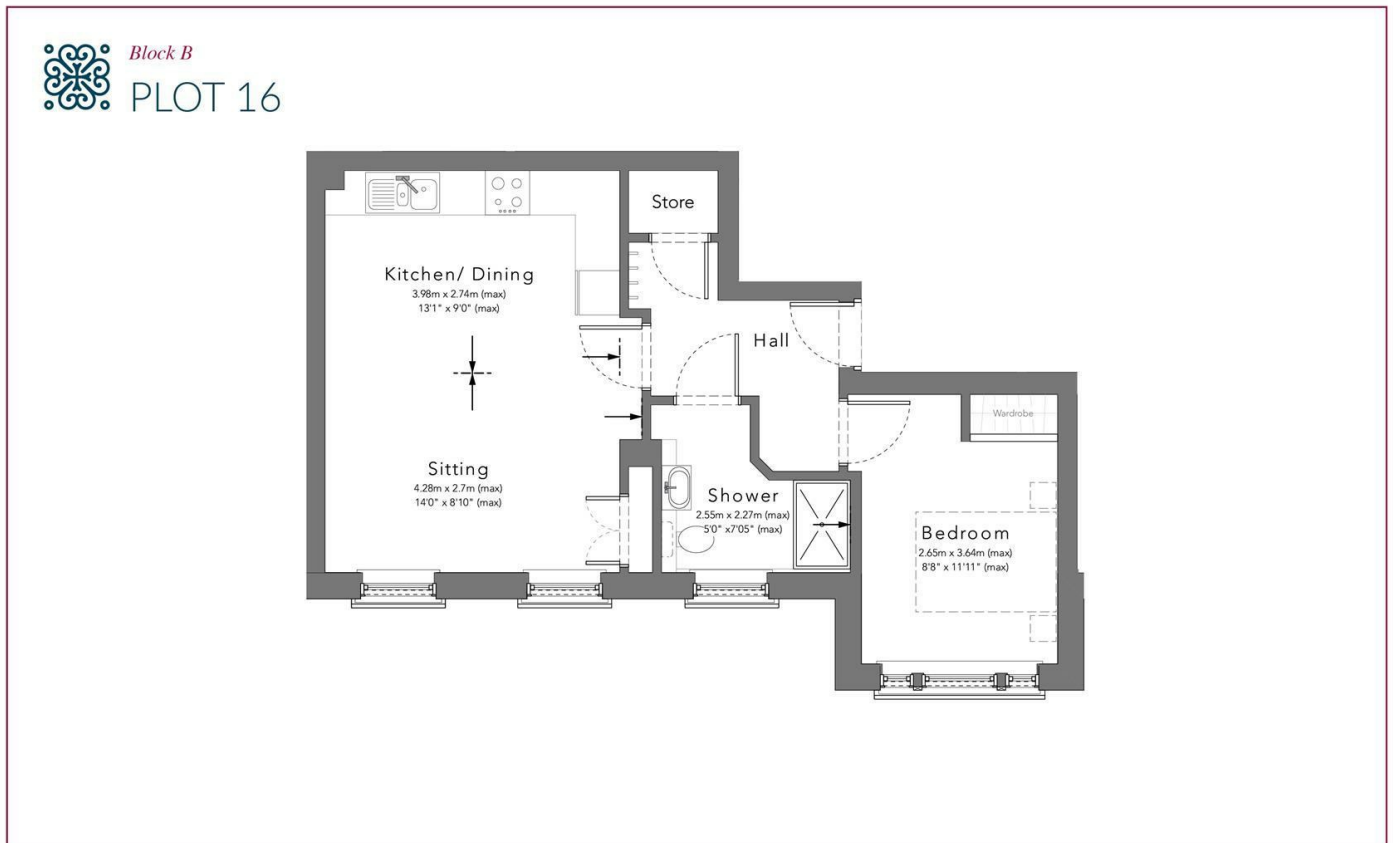
- BRAND NEW ONE BEDROOM FIRST FLOOR APARTMENT
- SITTING ROOM / DINING ROOM
- ONE ALLOCATED PARKING SPACE, COMMUNAL LIFT,
- ENTRANCE HALLWAY WITH STORAGE CUPBOARD
- ONE DOUBLE BEDROOM (NEW SLIDING WARDROBES TO BE FITTED)
- SITUATED CLOSE TO THE WEST SUFFOLK HOSPITAL AND THE TOWN CENTRE
- OPEN PLAN KITCHEN WITH INTEGRATED OVEN AND HOB, FRIDGE/FREEZER, DISHWASHER AND WASHING MACHINE
- STYLISH SHOWER ROOM, GAS CENTRAL HEATING, ENTRYPHONE SYSTEM
- VIDEO TOUR AVAILABLE UPON REQUEST, EPC 83B



[Directions](#)



Floor Plan



These particulars, whilst believed to be accurate are set out as a general outline only for guidance and do not constitute any part of an offer or contract. Intending purchasers should not rely on them as statements of representation of fact, but must satisfy themselves by inspection or otherwise as to their accuracy. No person in this firm's employment has the authority to make or give any representation or warranty in respect of the property.

12 Langton Place, Hatter Street, Bury St Edmunds, Suffolk, IP33 1NE
Tel: 01284 620011 Email: ryan@isaacstates.co.uk www.isaacstates.co.uk

Energy Efficiency Rating		Current	Potential
Very energy efficient - lower running costs			
(92 plus) A			
(81-91) B		83	83
(69-80) C			
(55-68) D			
(39-54) E			
(21-38) F			
(1-20) G			
Not energy efficient - higher running costs			
England & Wales		EU Directive 2002/91/EC	