



## Peckham Street

, Bury St. Edmunds, IP33 1SY

Isaac Estates are pleased to market this two bedroom terrace house situated walking distance to the town centre. The property has undergone some refurbishment to include a new kitchen, new bathroom, redecorated through out and new flooring.

Viewing highly recommend, sorry no pets.

£1,100 Per month

# Peckham Street

, Bury St. Edmunds, IP33 1SY

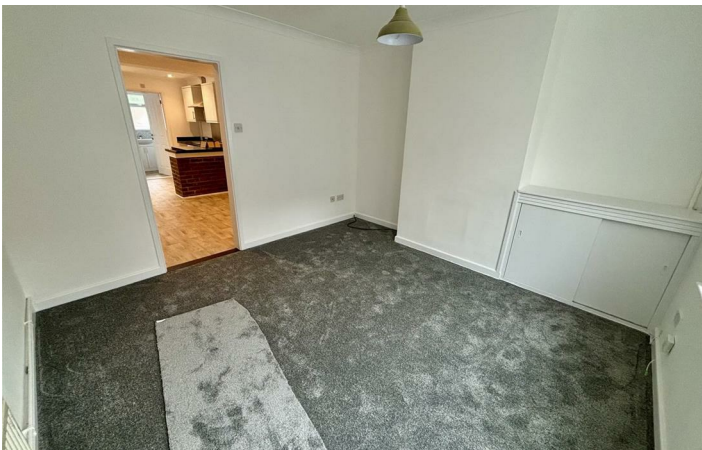


- PERIOD TWO BEDROOM TOWN HOUSE
- TWO DOUBLE BEDROOMS (SECOND BEDROOM WITH CUPBOARD HOUSING THE GAS BOILER), GAS CENTRAL HEATING
- SITUATED WALKING DISTANCE TO THE TOWN CENTRE
- SITTING ROOM, NEW KITCHEN WITH INTEGRATED OVEN AND HOB / DINING ROOM
- LOW MAINTENANCE REAR GARDEN WITH STORE
- NEW GROUND FLOOR BATHROOM, REAR HALLWAY
- MINIMUM TERM CONTRACT TWELVE MONTHS, EPC 61D



[Directions](#)







# Floor Plan

These particulars, whilst believed to be accurate are set out as a general outline only for guidance and do not constitute any part of an offer or contract. Intending purchasers should not rely on them as statements of representation of fact, but must satisfy themselves by inspection or otherwise as to their accuracy. No person in this firm's employment has the authority to make or give any representation or warranty in respect of the property.

12 Langton Place, Hatter Street, Bury St Edmunds, Suffolk, IP33 1NE  
Tel: 01284 620011 Email: [ryan@isaacestates.co.uk](mailto:ryan@isaacestates.co.uk) [www.isaacestates.co.uk](http://www.isaacestates.co.uk)

