



Trinity Mews

, Bury St. Edmunds, IP33 3AT

Well presented two bedroom first floor apartment, situated a short walk from the town centre of Bury St Edmunds, benefiting from an allocated parking space.

Please note the walls will be redecorated through out before a tenancy starts.

Video tour available upon request

£1,100 Per month

Trinity Mews

, Bury St. Edmunds, IP33 3AT



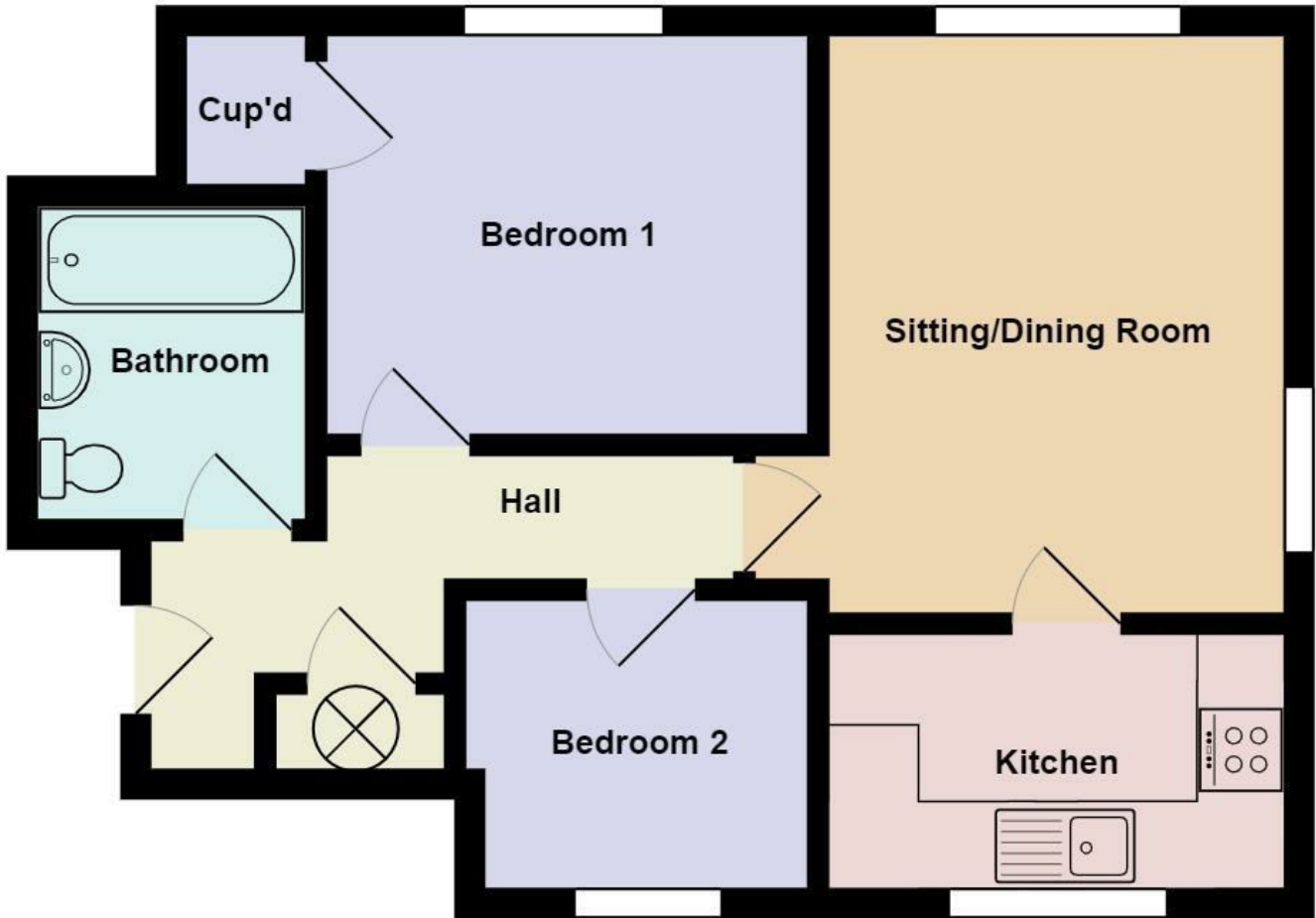
- MODERN FIRST FLOOR FLAT
- MASTER BEDROOM WITH FITTED WARDROBE
- ALLOCATED PARKING SPACE, SITUATED CLOSE TO TOWN CENTRE
- VIEWING HIGHLY RECOMMENDED
- ENTRANCE HALLWAY, SITTING ROOM / DINING ROOM
- FURTHER SECOND BEDROOM, REFITTED BATHROOM
- ALL WALLS TO BE REDECORATED
- MODERN KITCHEN WITH ELECTRIC OVEN AND HOB INCLUDED
- ELECTRIC HEATING, UNFURNISHED
- MINIMUM TERM CONTRACT TWELVE MONTHS



Directions



Floor Plan



These particulars, whilst believed to be accurate are set out as a general outline only for guidance and do not constitute any part of an offer or contract. Intending purchasers should not rely on them as statements of representation of fact, but must satisfy themselves by inspection or otherwise as to their accuracy. No person in this firm's employment has the authority to make or give any representation or warranty in respect of the property.

12 Langton Place, Hatter Street, Bury St Edmunds, Suffolk, IP33 1NE
 Tel: 01284 620011 Email: ryan@isaacestates.co.uk www.isaacestates.co.uk

Energy Efficiency Rating		Current	Potential
Very energy efficient - lower running costs			
(92 plus) A			
(81-91) B			
(69-80) C			
(55-68) D		68	
(39-54) E			
(21-38) F			
(1-20) G			
Not energy efficient - higher running costs			
England & Wales		EU Directive 2002/91/EC	