

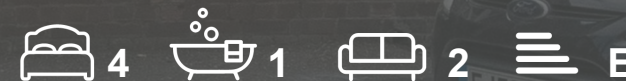
Isaac Estates

Sales and Lettings



18 Orchard Street
, Bury St. Edmunds, IP33 1EH

Offers in excess of £475,000



18 Orchard Street, Bury St. Edmunds, IP33 1EH

NO ONWARD CHAIN!!!! A rare opportunity to acquire this well presented, spacious, and extended four bedroom property located in the heart of the historic town of Bury St Edmunds. Ideal for a family, or anyone looking for town centre living, Please contact the office for further information.

The property itself consists of entrance hall, lounge, cloakroom, dining room, kitchen, conservatory, utility room, four bedrooms over two floors, family bathroom, and a cellar with potential for improvement. Externally is a privately enclosed rear garden.

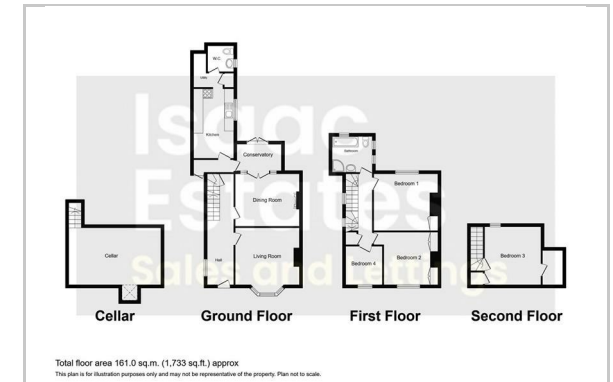


- Entrance Hall
- Living Room
12'0" x 14'2" (3.66 x 4.34)
- Dining Room
14'5" 12'0" (4.40 3.66)
- Conservatory
9'8" x 5'3" (2.95 x 1.62)
- Kitchen
11'10" x 13'5" (3.62 x 4.11)
- Utility
- Cloakroom
- Landing
- Bedroom One
11'11" x 14'7" (3.64 x 4.47)
- Bedroom Two
9'9" x 11'7" (2.99 x 3.54)
- Bedroom Three
12'2" x 11'10" (3.72 x 3.61)
- Bedroom Four
7'9" x 8'5" (2.37 x 2.57)
- Bathroom
- Landing
- Cellar
19'4" x 11'11" (5.91 x 3.65)
- Outside

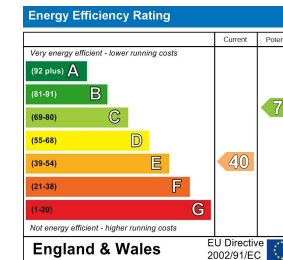
Area Map



Floor Plan



Energy Efficiency Graph



These particulars, whilst believed to be accurate are set out as a general outline only for guidance and do not constitute any part of an offer or contract. Intending purchasers should not rely on them as statements of representation of fact, but must satisfy themselves by inspection or otherwise as to their accuracy. No person in this firms employment has the authority to make or give any representation or warranty in respect of the property.

12 Langton Place, Hatter Street, Bury St Edmunds, Suffolk, IP33 1NE
Tel: 01284 620011 Email: ryan@isaacestates.co.uk www.isaacestates.co.uk